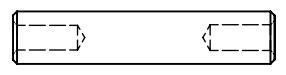
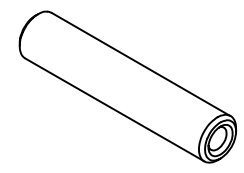


REVISIONS				
ZONE	REV	DESCRIPTION	DATE	APPROVAL
N/A	1	Initial Release for QUOTE ONLY	9/27/2002	MHL_III
	3	revised notes	11/14/02	



**NOTES:**

- 1) MATERIAL: 01 Tool Steel
- 2) Hardened through to 60 RC
- 3) Grind to .1875 +.0002-.0000
- 4) All 1:1 scale dimensions are contained in C.A.D. drawings.

NOTICE TO ALL PERSONS RECEIVING THIS DRAWING,  
 CONFIDENTIAL MATERIAL:  
 Reproduction is forbidden without the written consent of  
 D.A.M. Good Engineering, San Jose, California.  
 This drawing is only conditionally issued, and neither  
 possession nor receipt thereof confers or transfers  
 any right in or license to use the subject matter of the  
 drawing or any design or technical information shown  
 thereon, except for manufacture for D.A.M. Good Engineering  
 or for the manufacture under the corporation's written license.  
 No rights are granted to reproduce this drawing or the subject  
 matter thereof unless by written agreement or by written  
 permission from the corporation.

DRAWN  
 M Loper  
 CHECKED  
 DESIGNER  
 D. McMillan  
 APPROVED  
 MFG  
 D.A.M. Good Eng/Mfg  
 QA

D.A.M. Good Engineering  
 2720 #A Aiello  
 San Jose, CA 95111  
 TITLE  
 Wrist Pin 9965  
 SIZE DWG NO  
 C WristPin 9965  
 REV  
 3