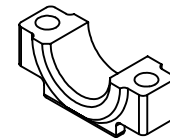
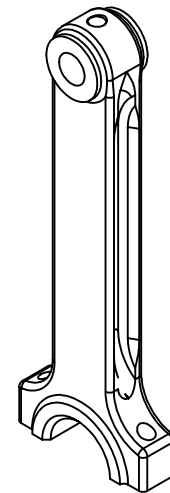
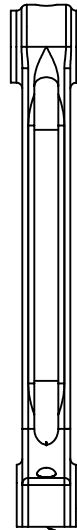
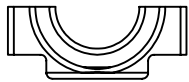
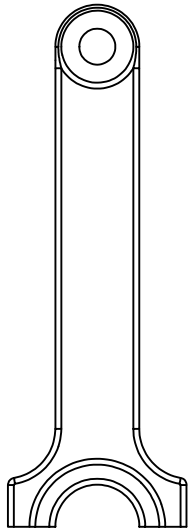


REVISIONS				
ZONE	REV	DESCRIPTION	DATE	APPROVAL
N/A	1	Initial Release for QUOTE ONLY	10/10/2002	MHL_III
	2	revised notes	11/14/02	



See Note 5

NOTES:

- 1) MATERIAL: Aluminum 7075-T651
- 2) 2.500" center to center
- 3) .1885 dia. wrist pin bore
- 4) .4370 dia. crank journal bore
- 5) Rod and Cap to be match marked 1 thru 4.
- 6) All 1:1 scale dimensions are contained in C.A.D. drawings.

TOLERANCES UNLESS OTHERWISE SPECIFIED: DECIMALS X.X ± .03 X.XX ± .015 X.XXX ± .005 ANGULAR XX ± .1' XX.X ± .5' FRACTIONAL 1/64	NOTICE TO ALL PERSONS RECEIVING THIS DRAWING, CONFIDENTIAL MATERIAL: Reproduction is forbidden without the written consent of D.A.M. Good Eng & Mfg, San Jose, California. This drawing is only conditionally issued, and neither possession nor receipt thereof confers or transfers any right in or license to use the subject matter of the drawing or any design or technical information shown thereon, except for manufacture for D.A.M. Good Eng & Mfg or for the manufacture under the corporation's written license. No rights are granted to reproduce this drawing or the subject matter thereof unless by written agreement or by written permission from the corporation.	DRAWN MLoper CHECKED	10/10/2002	D.A.M. Good Engineering & Manufacturing 2720-A Aiello Drive San Jose, CA 95111		
		DESIGNER D. McMillan APPROVED		TITLE Race Rod & Cap Set		
		MFG D.A.M. Good Eng & Mfg QA		SIZE C	DWG NO Rod&CapSet	REV 2
		DO NOT SCALE DRAWING		SHEET 1 OF 1		