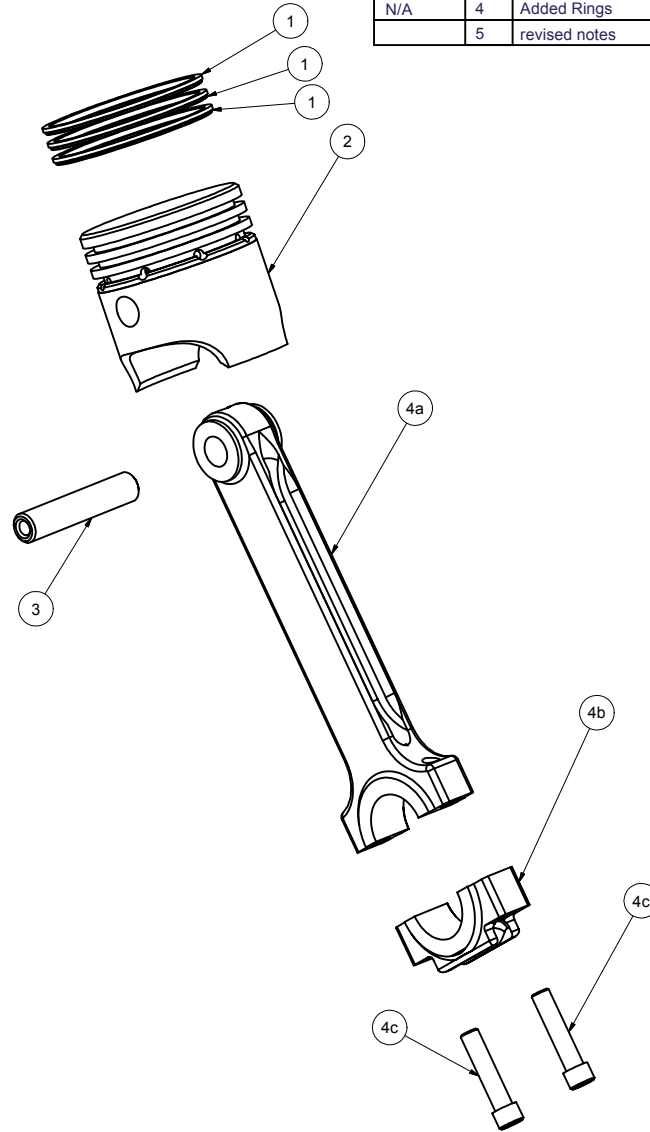


# Design Specifications

- 1) Rings:
  - Material: Cast Iron AMS AERO 7310
  - Produced with zero butt gap for precision fitting by end user.
- 2) Piston:
  - Material Aluminum 6061-T6
  - Lightened for performance with maximum residual strength in mind
  - Skirt maintains a full 1/4" radii
  - I.D. 45° chamfer assists in wiping action
  - Wrist pin journal bosses are undercut in ring zone for minimal thermal distortion
  - Main body .9965 Dia. +or-.0002 fits 1.000" sleeves
  - Top and ring landings .9950 dia. for additional thermal expansion clearance
  - Wrist pin journal bores are .1873 (resizing available to one or both sides upon request)
  - Oil channeling includes chamfer and 8 recirculating holes on lower oil ring wall
  - Maximum chamfer around inside base of skirt counter bore for weight reduction.
- 3) Wrist pin:
  - Material: O1 tool steel; RC 60
  - Ground to .1875 +.0002-.0000
  - .910 length leaves clearance for Teflon end caps
  - Drilled out both sides 1/4" deep (solid in the rod end zone)
  - Chamfered o.d. & i.d.
  - (2) Teflon pin caps available with each pin
- 4) Rod & Cap:
  - Material: Aluminum 7075-T651
  - Lightened for performance with maximum residual strength
  - Deep full radii internal side cuts include knife edge chamfers
  - Fully radiused outside where possible
  - Cap, full radius end-cut maintains consistent wall thickness to main journal diameter
  - Cap bolt head clearance retains fillet for no stress riser, w/ spotface seating clearance
  - Chamfered one side only for main journal fillet clearance
  - 2.500" center to center (fits Cole Challenger)
  - .1885 dia. wrist pin clearance (.0008 / .0010 using DAM Good pin)
  - .4370 dia. main (resizing available upon request)
- 5) Full or partial assembly available to your specs or ours



REVISIONS				
ZONE	REV	DESCRIPTION	DATE	APPROVAL
N/A	1	Initial Release for QUOTE ONLY	10/3/2002	MHL_III
N/A	2	Added Missing Angle Cut	10/05/02	MHL_III
N/A	3	Detailed Rod & Cap	10/06/02	MHL_III
N/A	4	Added Rings	10/08/02	MHL_III
	5	revised notes	11/14/00	MHL_III

Parts List				
ITEM	QTY	PART NUMBER	DESCRIPTION	
1	3	1000RING	Cast Iron	
2	1	PISTON 9965	6061	
3	1	WRISTPIN 9965	O1 Tool Steel	
4a	1	ROD 9965	7075	
4b	1	CAP 9965	7075	
4c	2	SHCS-English-UNC	5-40x1/2lg Alloy Steel	

**TOLERANCES UNLESS OTHERWISE SPECIFIED:**

**DECIMALS**  
 XX ± .03  
 X.XX ± .015  
 X.XXX ± .005

**ANGULAR**  
 XX ± .1°  
 XX.X ± .5°

**FRACTIONAL**  
 1/64

**NOTICE TO ALL PERSONS RECEIVING THIS DRAWING, CONFIDENTIAL MATERIAL:**  
 Reproduction is forbidden without the written consent of D.A.M. Good Eng & Mfg, San Jose, California.  
 This drawing is only conditionally issued, and neither possession nor receipt thereof confers or transfers any right in or license to use the subject matter of the drawing or any design or technical information shown thereon, except for manufacture for D.A.M. Good Eng & Mfg or for the manufacture under the corporation's written license. No rights are granted to reproduce this drawing or the subject matter thereof unless by written agreement or by written permission from the corporation.

DRAWN MLoper	10/3/2002
CHECKED	
DESIGNER D. McMillan	
APPROVED	
MFG D.A.M. Good Eng & Mfg	
QA	

D.A.M. Good Engineering & Manufacturing 2720-A Aiello Drive San Jose, CA 95111	
TITLE <b>Assembly, Piston &amp; Rod</b>	
SIZE <b>C</b>	DWG NO <b>Assy_Piston&amp;Rod</b>
REV <b>5</b>	